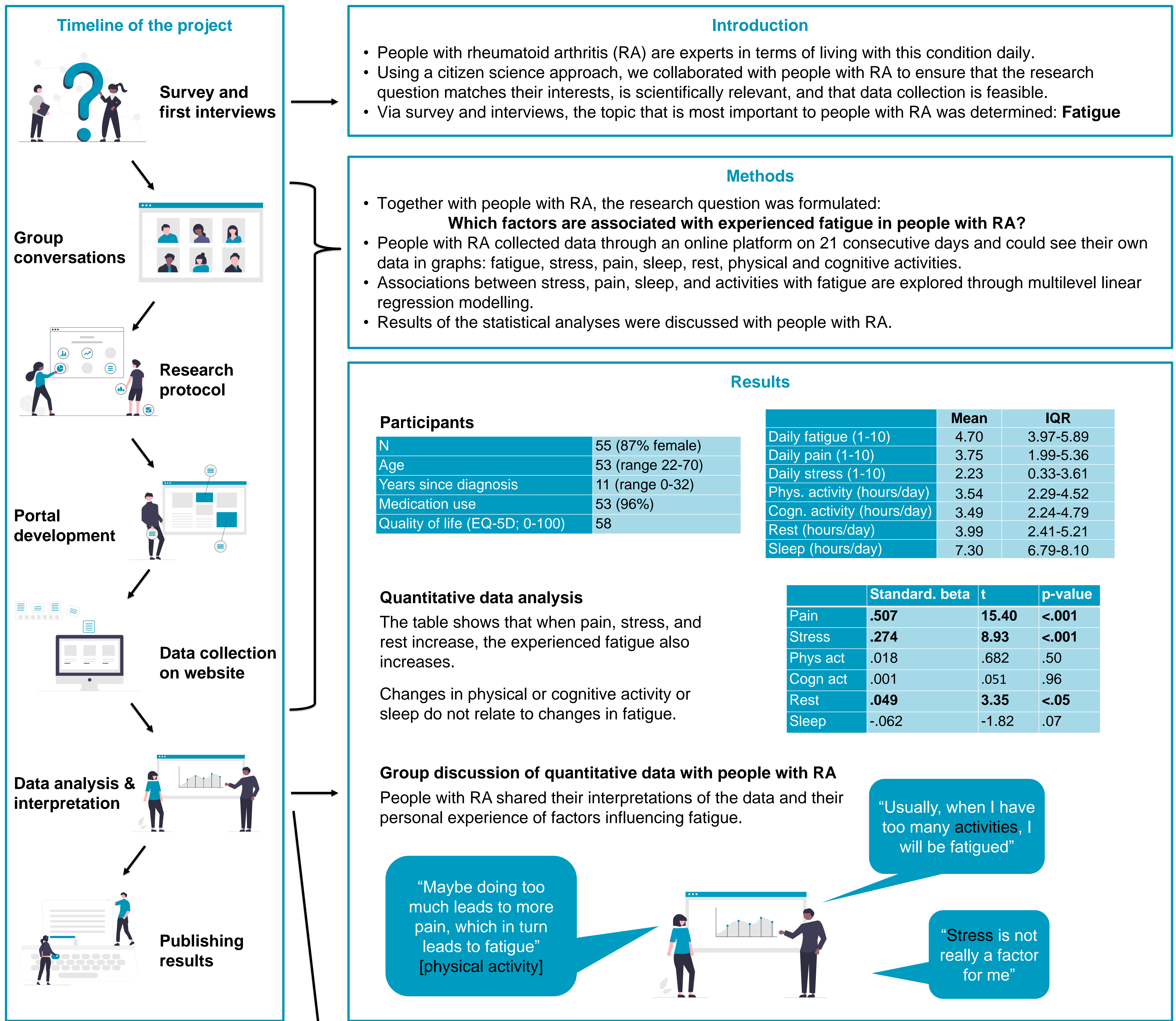


Associations Over Time Between Fatigue, Stress, Pain, Sleep And Activities In Rheumatoid Arthritis: A Citizen Science And Experience Sampling Study

Ria Wolkorte¹, Christiane Grünloh^{1,2}, Clementine Ophuis (on behalf of the patient representatives), Lieke Heesink¹



Discussion

- Discrepancy between personal experiences and data: further research needed
- Monitoring provides valuable insights, both for the individual and scientists/clinicians
- People with RA were enthusiastic about the project and like to stay involved

Co-designing all steps in a study together with patient representatives results in feasible, relevant and robust research.

Citizen science empowers patients and benefits from their intrinsic inquisitive capacities.

Questions or ideas? Contact us:



Ria Wolkorte
r.wolkorte@utwente.nl



Christiane Grünloh
c.grunloh@rrd.nl



Clementine Ophuis
clementine.ophuis@gmail.com



Lieke Heesink
l.heesink@utwente.nl